

*SÍNTESIS Y
ENCAPSULACIÓN DE
METALOFÁRMACOS
PARA EL
TRATAMIENTO DEL
CÁNCER DE MAMA.*

ELENA DOMÍNGUEZ JURADO

PREDOC GRUPO ORCATS

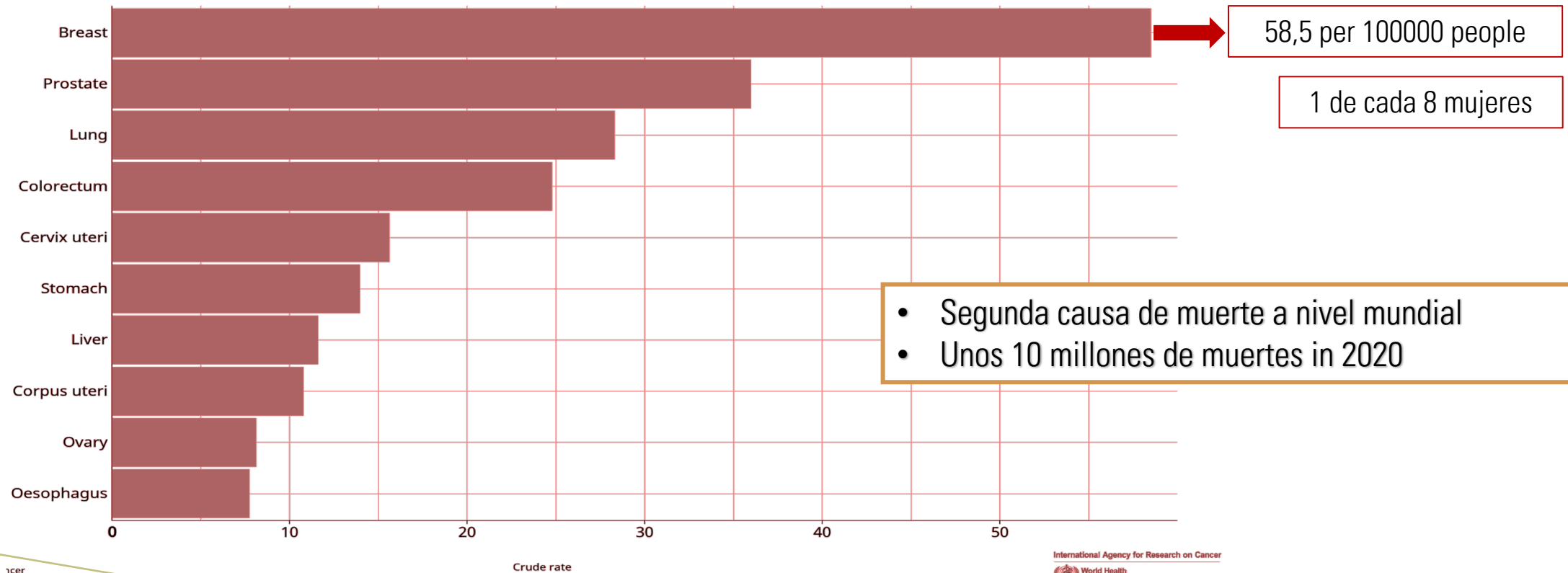


¿DÓNDE ESTÁ EL GRUPO ORCATS?

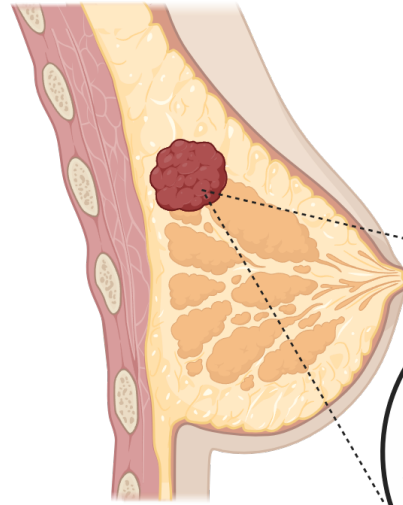


CÁNCER DE MAMA

Estimated crude incidence rates in 2020, worldwide, both sexes, all ages



CÁNCER DE MAMA



Receptores
HR: Hormonal
ER: Estrógenos
PR: Progesterona
HER2

Luminal A (~40%)
HR+ (ER+ y/o PR+), HER2-

Luminal B (~20%)
HR+ (ER+ y/o PR+), HER2+/-

HER2 positivo (~10-15%)
HR- (ER-, PR-), HER2+

Triple Negativo (~15-20%)
HR- (ER-, PR-), HER2-

Mejor pronóstico



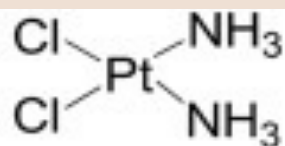
Peor pronóstico



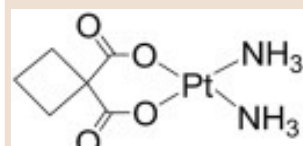
CÁNCER DE MAMA: TRATAMIENTO

Metalofármacos utilizados en cáncer de mama

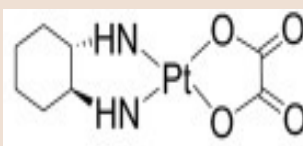
Cisplatino



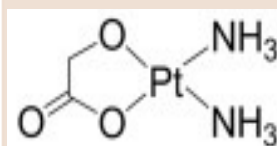
Carboplatino



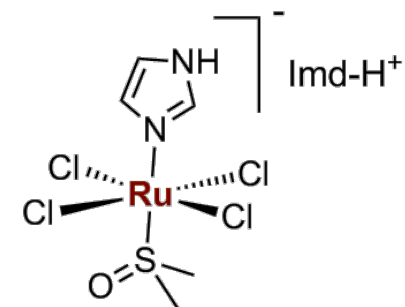
Oxaliplatino



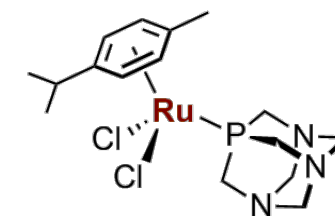
Nedaplatino



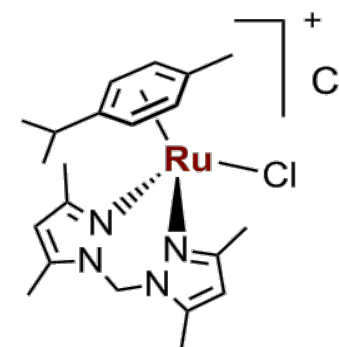
Principal problema: efectos adversos and desarrollo de resistencias



NAMI-A

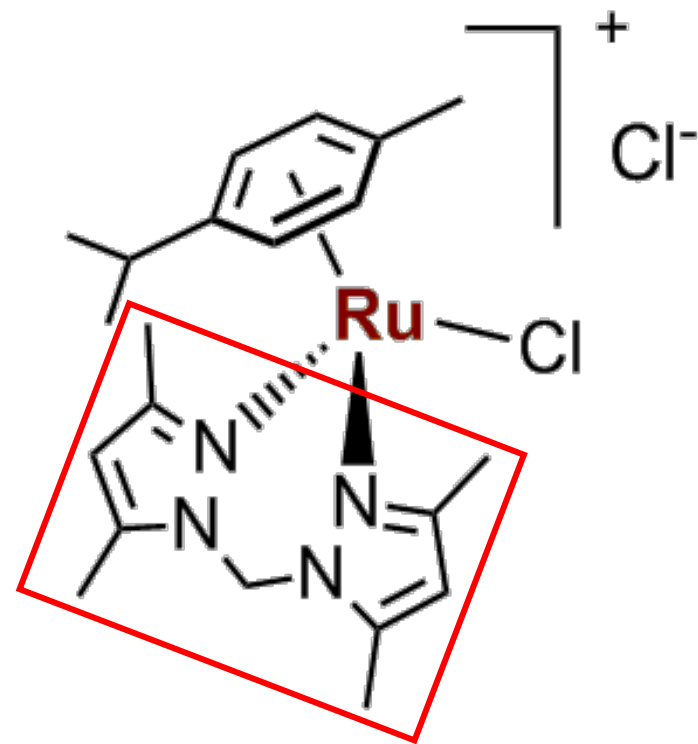


RAPTA-C



UNICAM-1

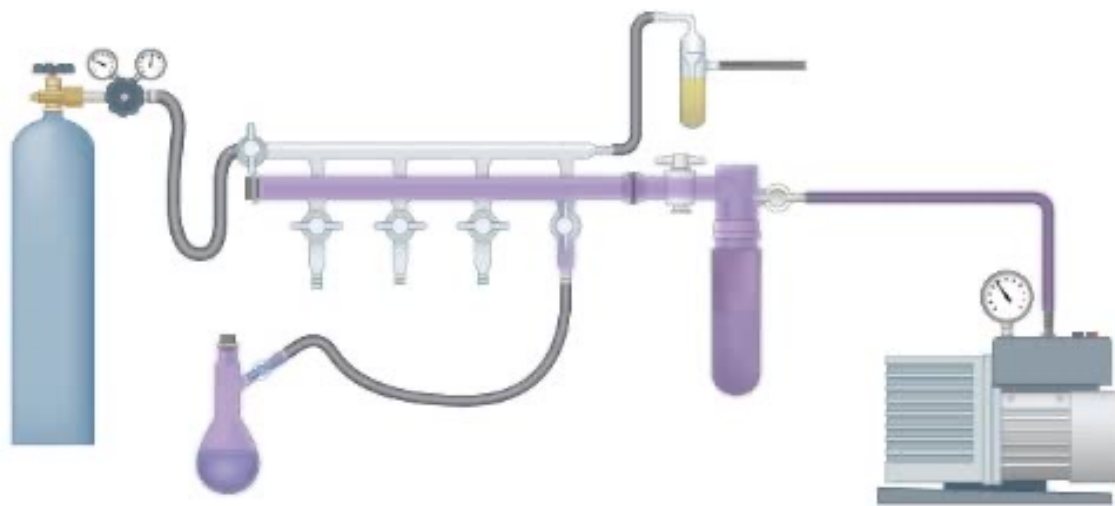
UNICAM-1



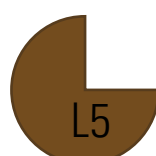
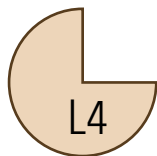
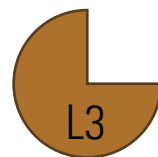
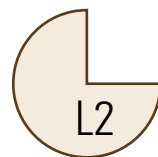
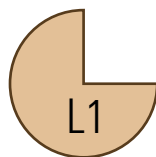
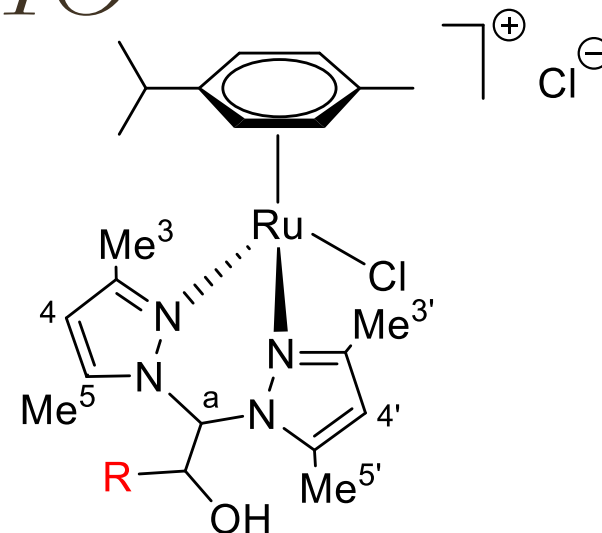
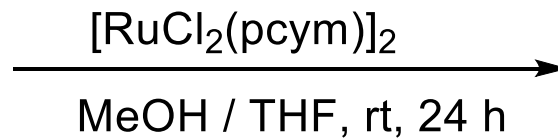
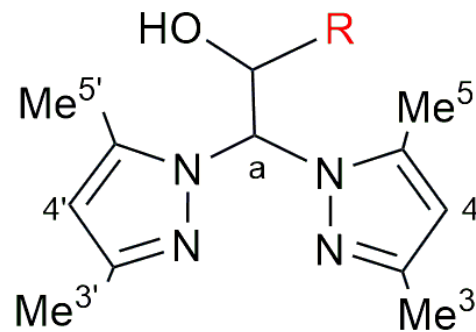
Actividad en cáncer de
mama triple negativo

SÍNTESIS DE LIGANDOS Y COMPLEJOS DE RUTENIO

Schlenk Line



SÍNTESIS DE LIGANDOS Y COMPLEJOS DE RUTENIO

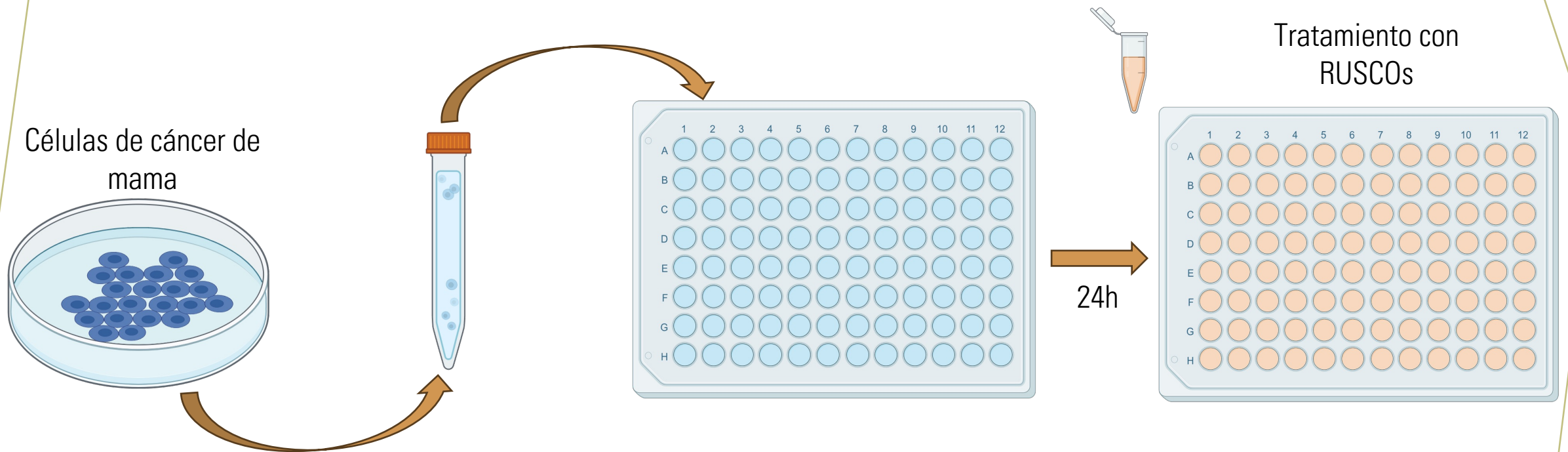


LIGANDOS

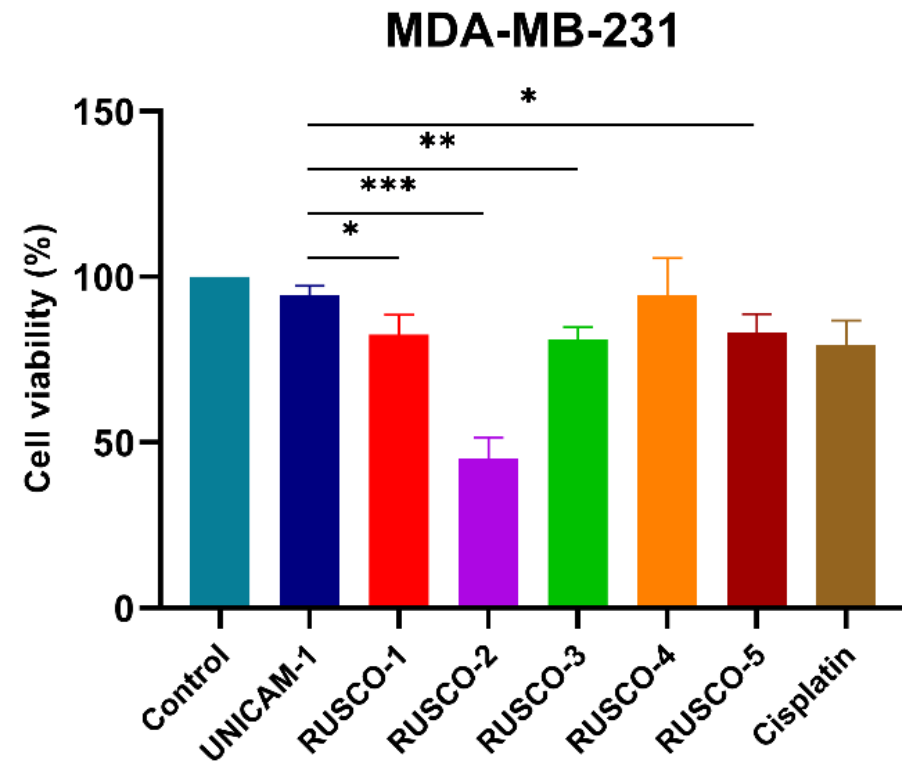
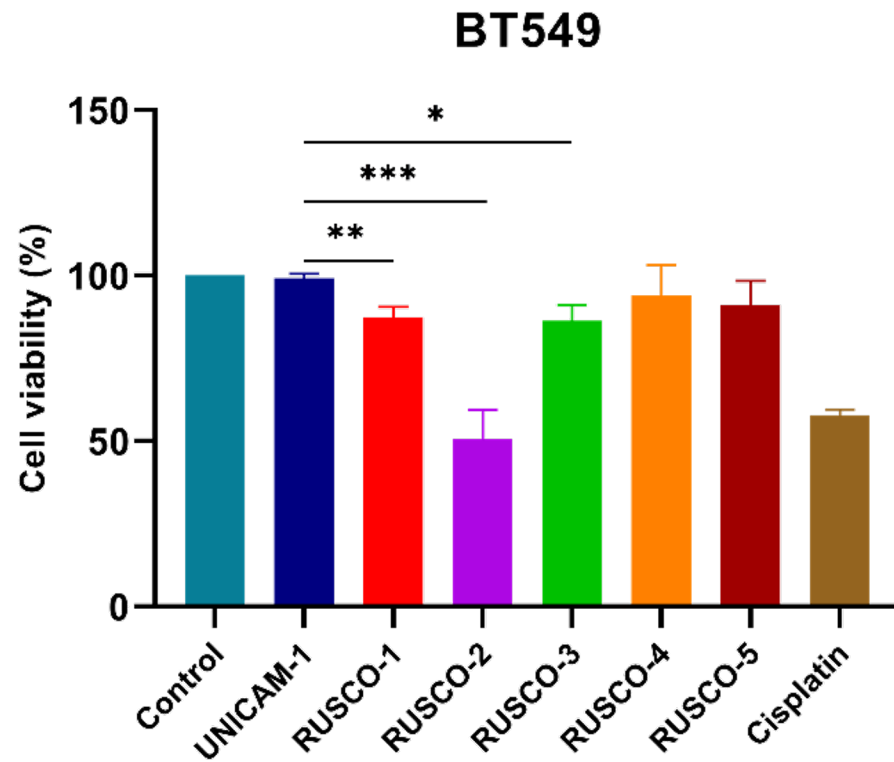


COMPLEJOS DE RUTENIO (RUSCOs)

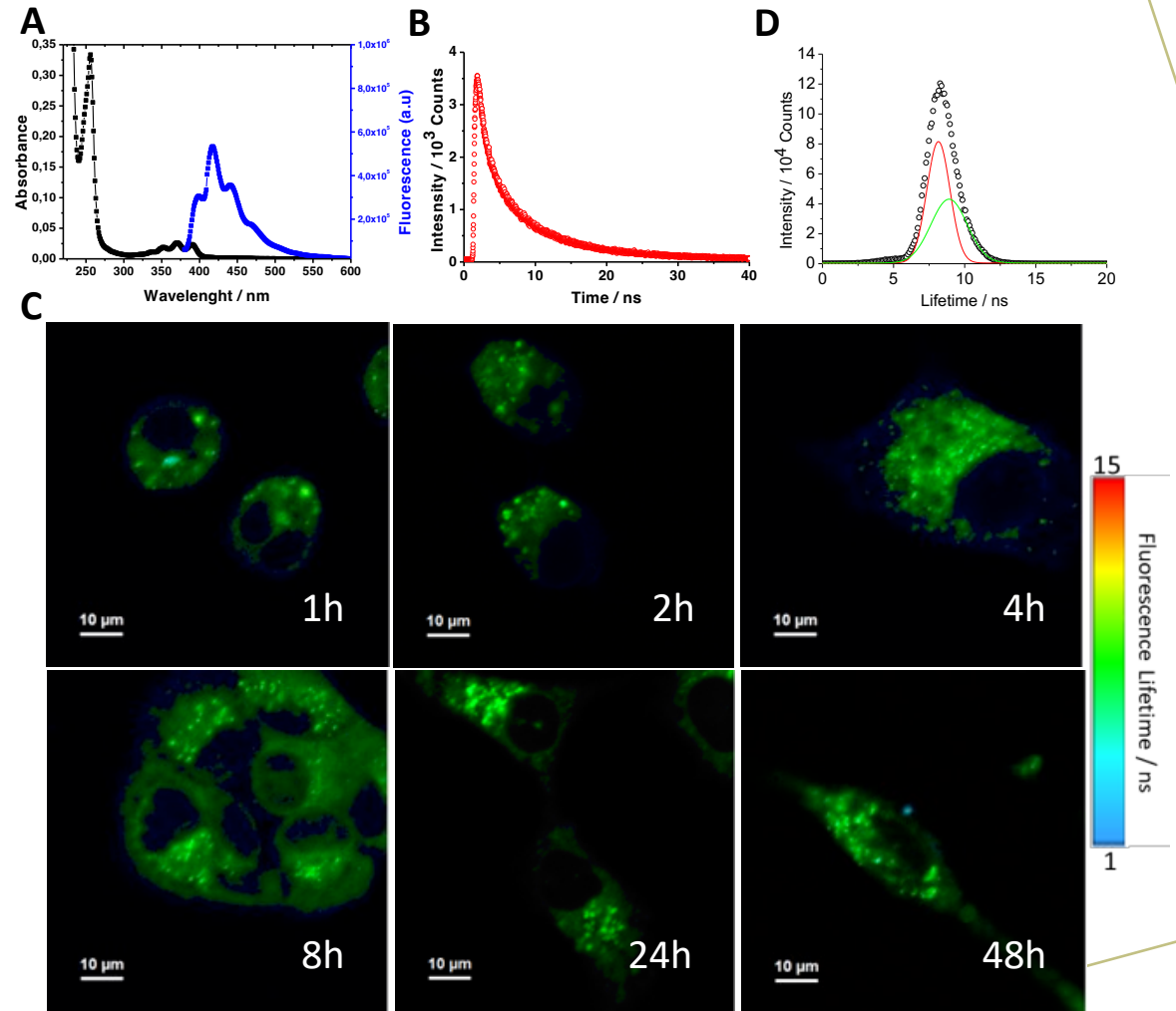
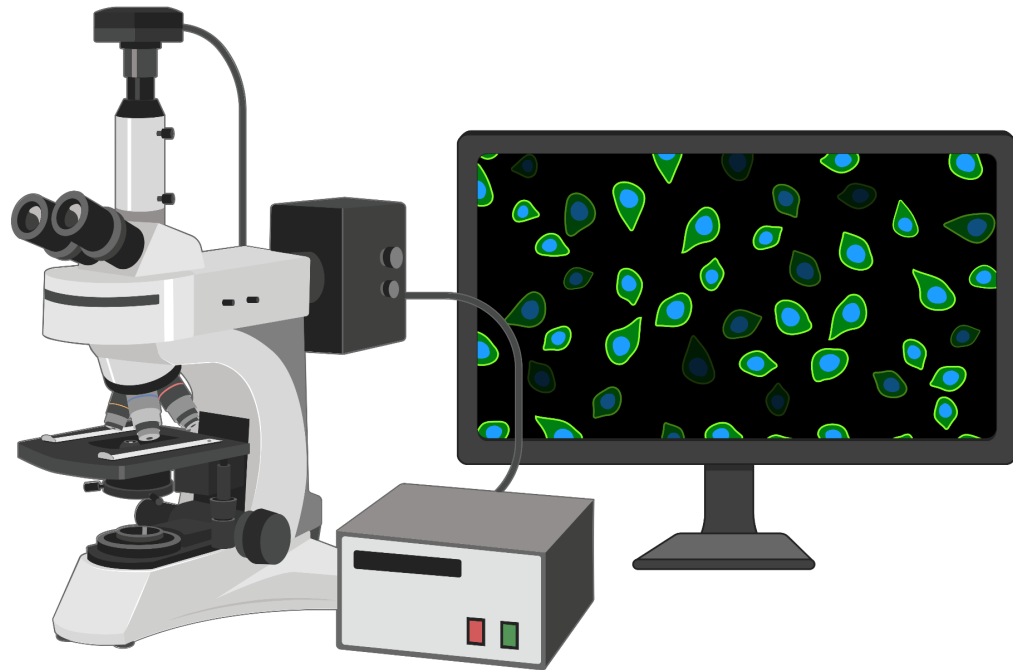
ENSAYOS IN VITRO EN CÉLULAS TUMORALES



ENSAYOS IN VITRO EN CÉLULAS TUMORALES

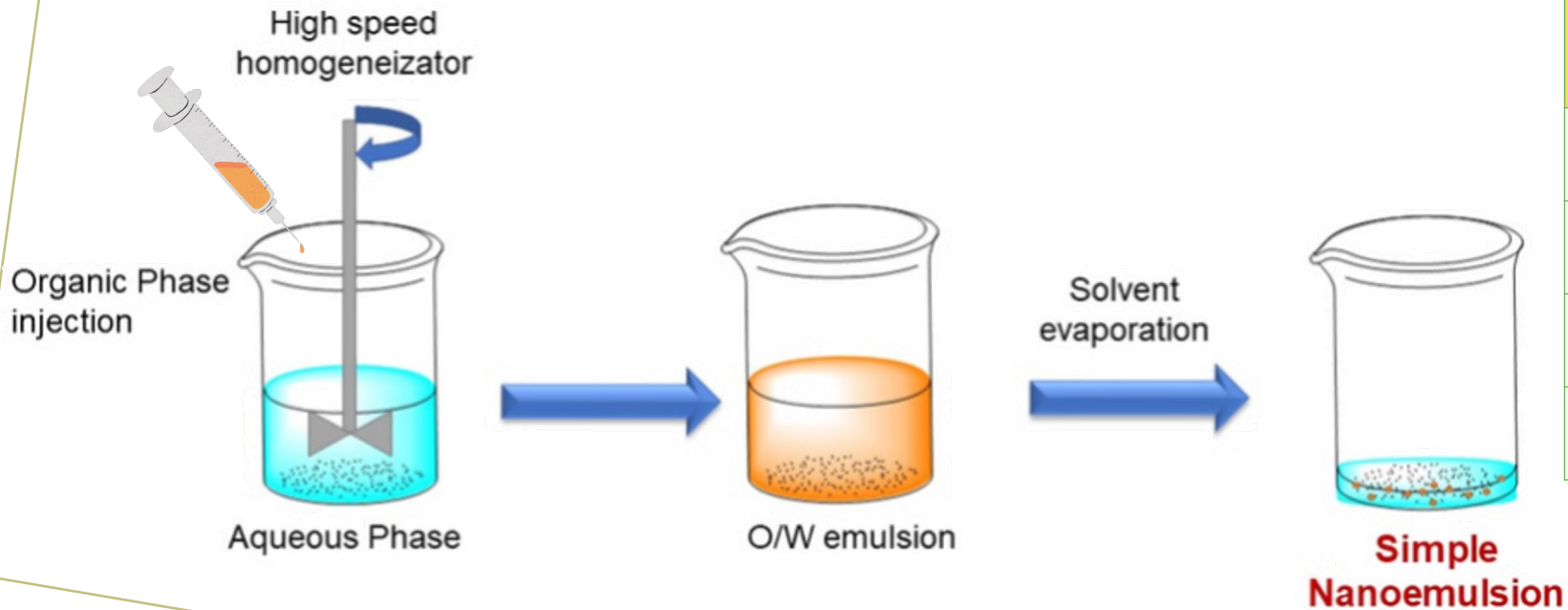


ESTUDIO DE UPTAKE MEDIANTE FLIM



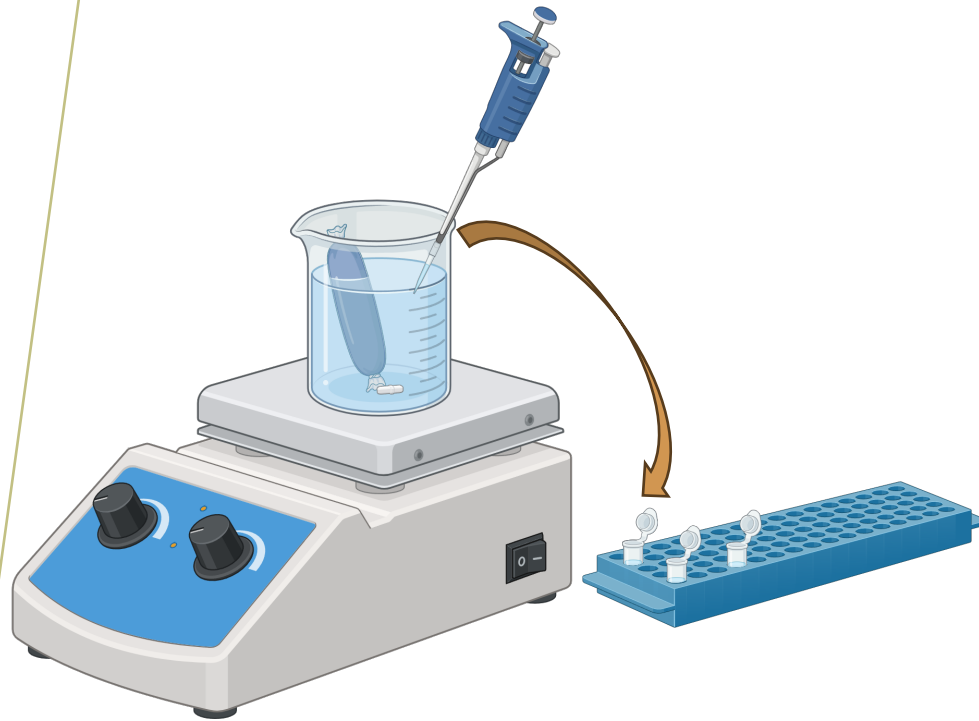
ENCAPSULACIÓN DE FÁRMACOS

Método de emulsificación

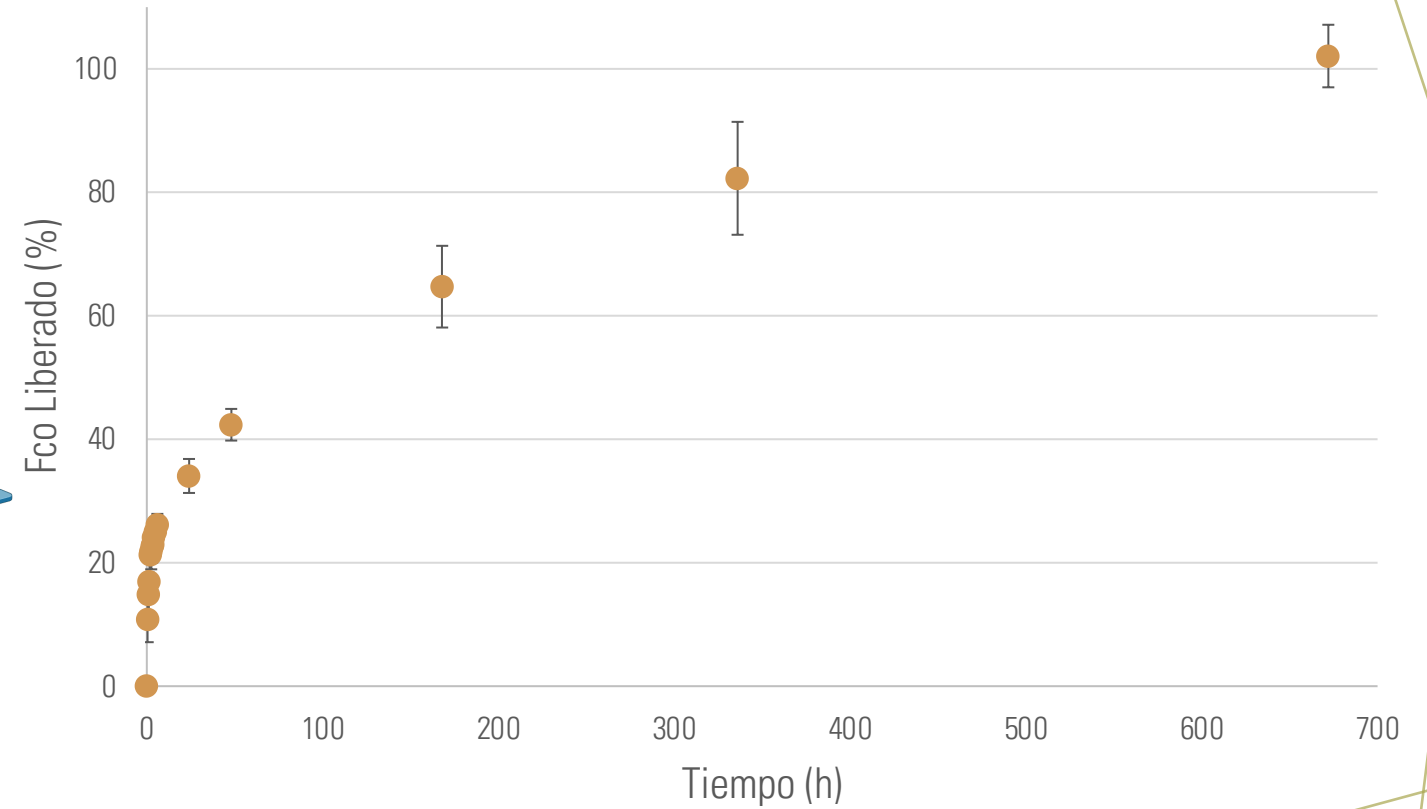


| CARACTERIZACIÓN DE LIPOSOMAS | |
|------------------------------|-------------------|
| SIZE (nm) | 62.08 ± 1.20 |
| PDI | 0.082 ± 0.002 |
| ZETA POTENTIAL | -32.1 ± 1.15 |
| EE (%) | 95 |

ENCAPSULACIÓN DE FÁRMACOS



Liberación de un fármaco



GRUPO ORCATS

